

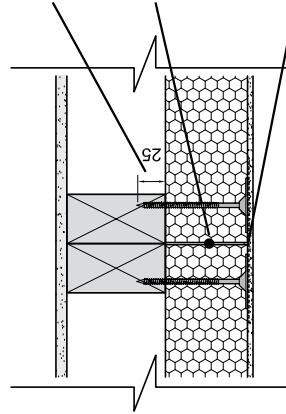
MASTERWALL
INNOVATORS OF POLYSTYRENE CLADDING

TECHNICAL DOCUMENT:
CONSTRUCTION DETAILS

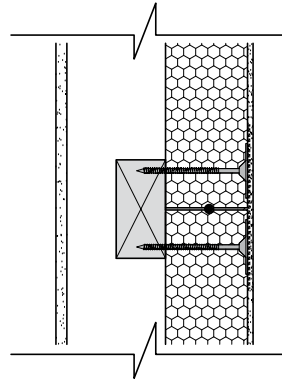
Typical Joints between Panels 50, 75, & 100mm Thick Master Wall

NOTES FOR ALL FIGURES

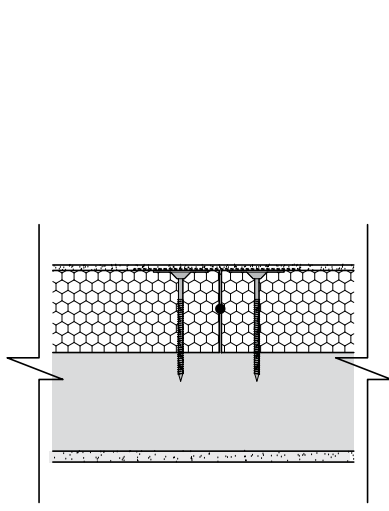
- Screw fixing must be at least 25mm greater in length than thickness of MasterWall Panel
- 8mm Bead of Construction Urethane at midpoint of panel thickness to all joints.
- fibreglass mesh re-inforcing strip laid across joint suspended in first coat of acrylic render system.



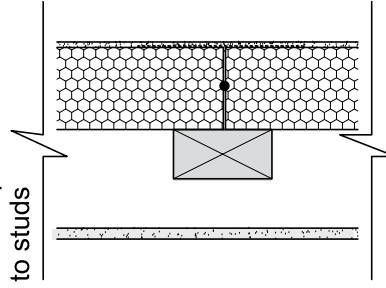
Joint at Stud Position - Double Stud Required



Joint between studs - Blocking Piece Required



50,75 & 100mm thick panels on 450 or 600 centre studs
 - Panels fixed to studs



50mm thick panels on 450 centre studs
 or 50, 75, 100mm thick panels on 600 centre studs
 - blocking pieces required between studs

Horizontal Joints - Section View

Vertical Joints - Plan View

These details are indicative for the purpose of illustrating the typical installation of MasterWall Panels. Panels are to be installed strictly in accordance with the Product Specification & Installation Manual. Construction to be in accordance with Building Regulations & Statutory Requirements.