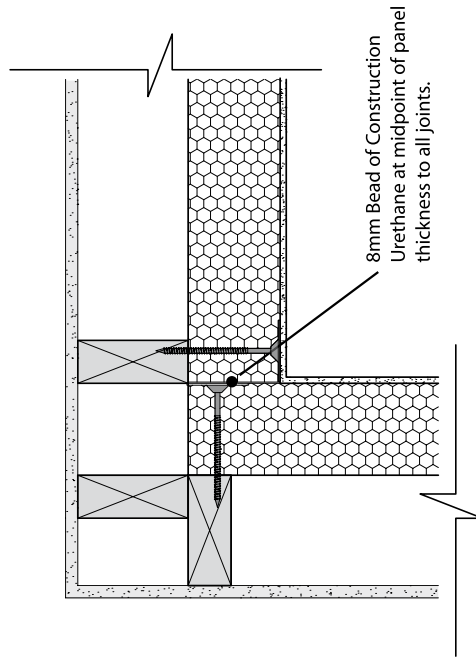


**MASTERWALL**  
INNOVATORS OF POLYSTYRENE CLADDING

**TECHNICAL DOCUMENT:**  
**CONSTRUCTION DETAILS**

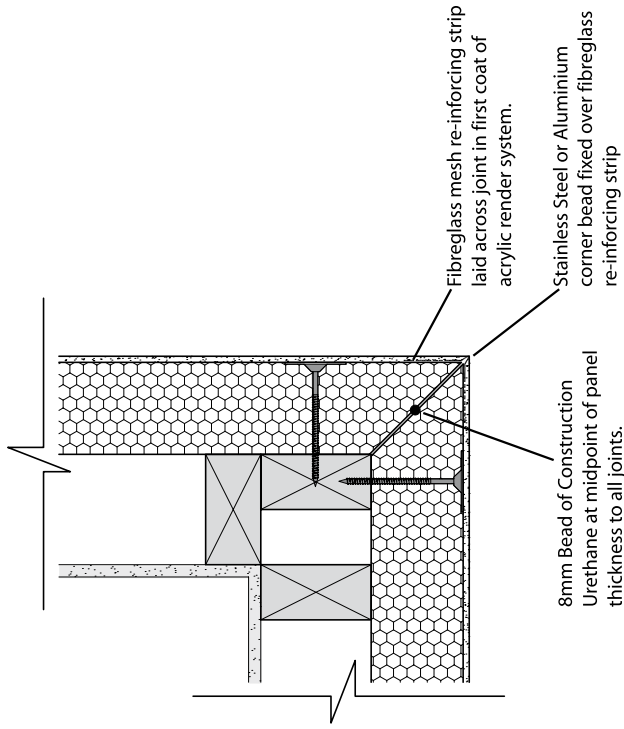
# Typical Corner Joints

# 50, 75, & 100mm Thick Master Wall



MasterWall Panels Butt Jointed

## Internal Corner - Plan View



MasterWall Panels Mitre Cut

## External Corner - Plan View

These details are indicative for the purpose of illustrating the typical installation of MasterWall Panels. Panels are to be installed strictly in accordance with the Product Specification & Installation Manual. Construction to be in accordance with Building Regulations & Statutory Requirements.