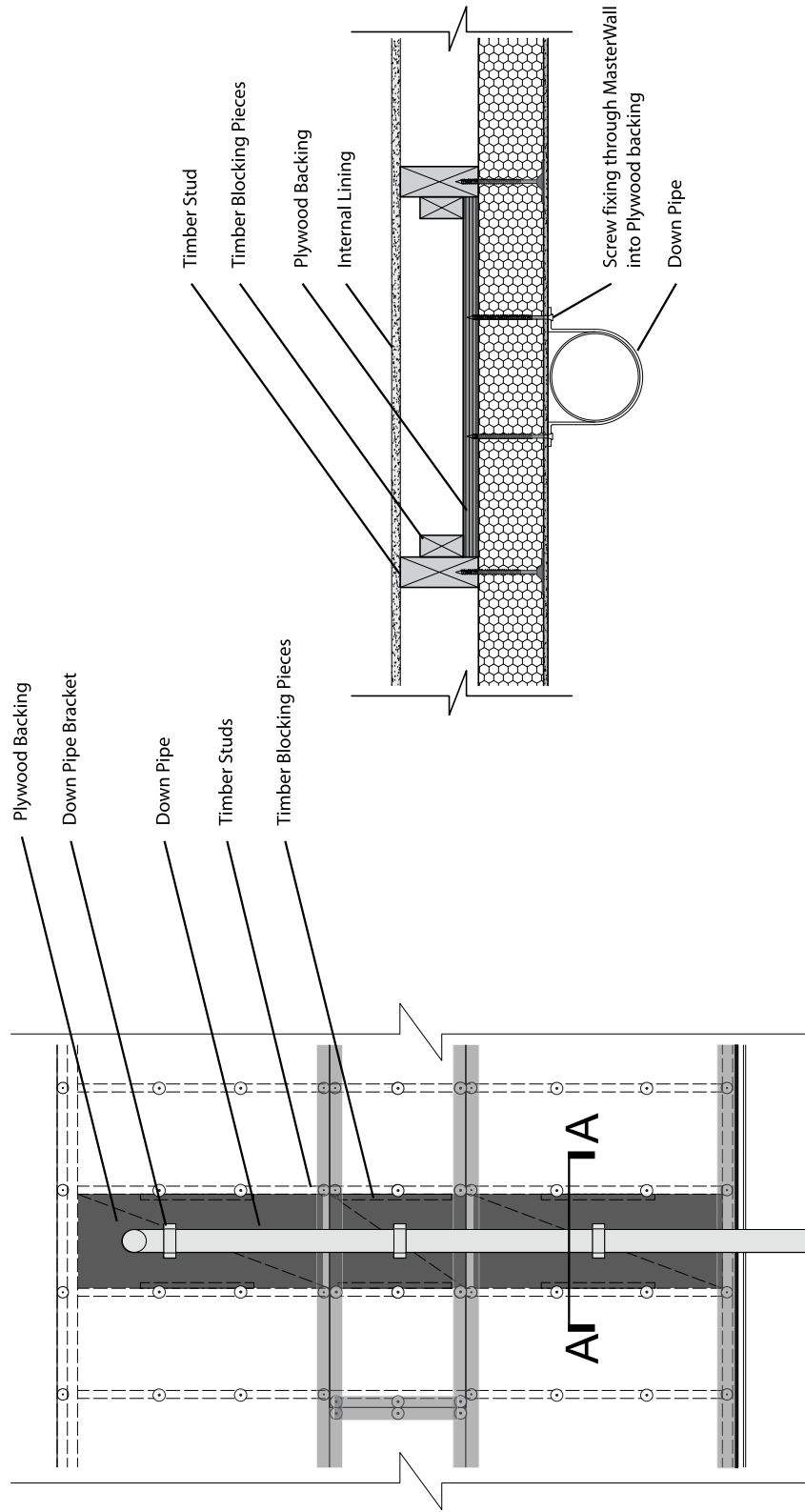


MASTERWALL
INNOVATORS OF POLYSTYRENE CLADDING

TECHNICAL DOCUMENT:
CONSTRUCTION DETAILS

Typical Fixing Support for Down Pipe 50, 75, & 100mm Thick Master Wall



Down Pipe - Section View A'A

Down Pipe - Elevation View

These details are indicative for the purpose of illustrating the typical installation of MasterWall Panels. Panels are to be installed strictly in accordance with the Product Specification & Installation Manual. Construction to be in accordance with Building Regulations & Statutory Requirements.