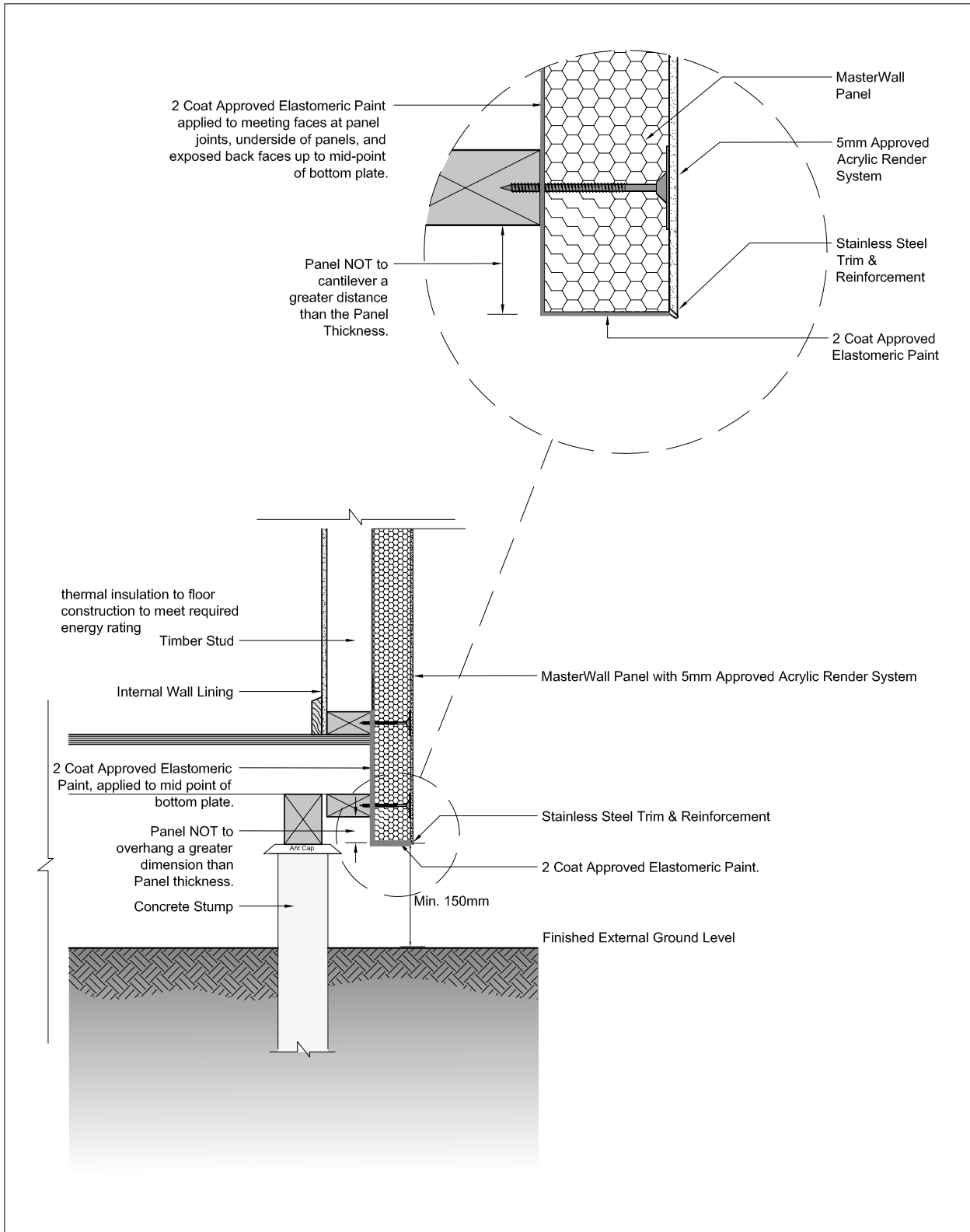


MASTERWALL
INNOVATORS OF POLYSTYRENE CLADDING

TECHNICAL DOCUMENT:
CONSTRUCTION DETAILS



MasterWall Panel & Concrete Stump Construction - Protruding Panel

These details are indicative for the purpose of illustrating the typical installation of MasterWall Panels. Panels are to be installed strictly in accordance with the Product Specification & Installation Manual. Construction to be in accordance with Building Regulations & Statutory Requirements.