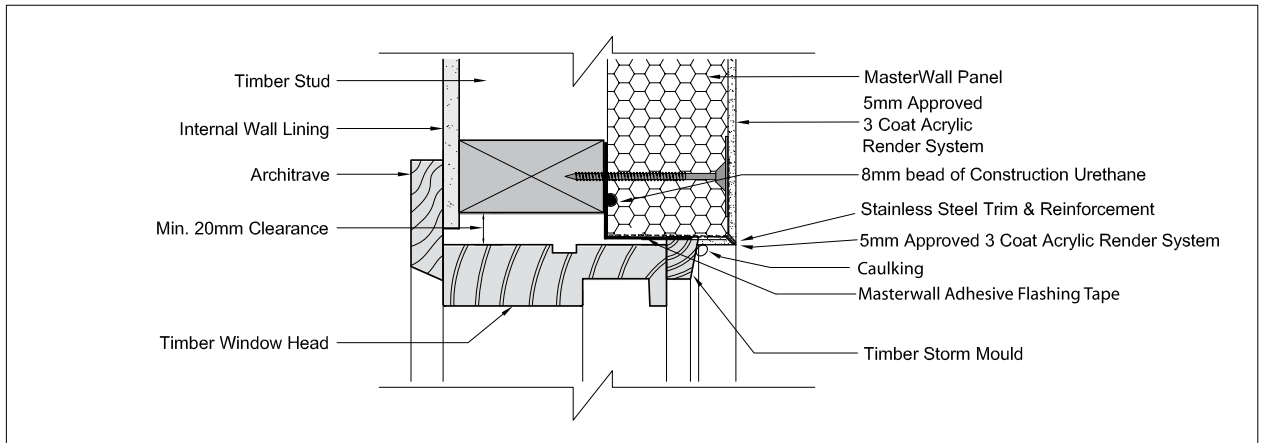
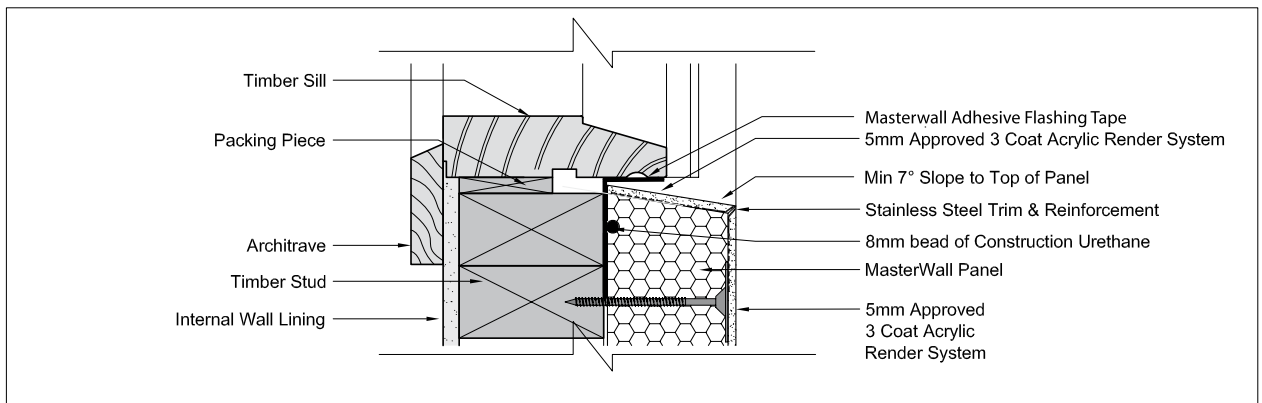


MASTERWALL
INNOVATORS OF POLYSTYRENE CLADDING

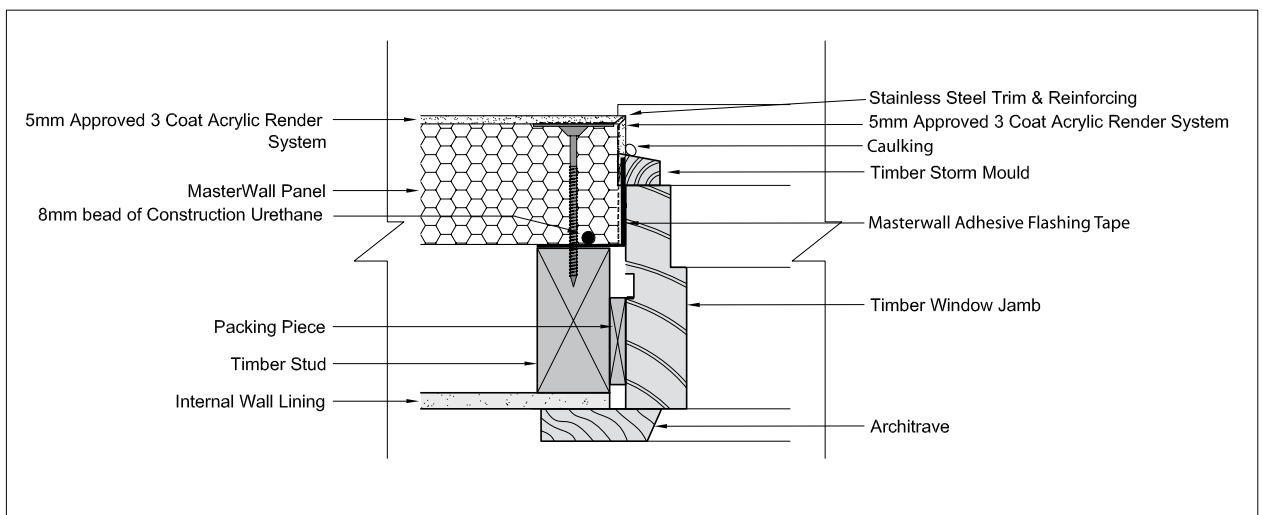
TECHNICAL DOCUMENT:
CONSTRUCTION DETAILS



**MasterWall Panel / Timber Window
 Typical Head Detail**



**MasterWall Panel / Timber Window
 Typical Sill Detail**



**MasterWall Panel / Timber Window
 Typical Side Jamb Detail**

These details are indicative for the purpose of illustrating the typical installation of MasterWall Panels. Panels are to be installed strictly in accordance with the Product Specification & Installation Manual. Construction to be in accordance with Building Regulations & Statutory Requirements.